



Mobile transport management solutions

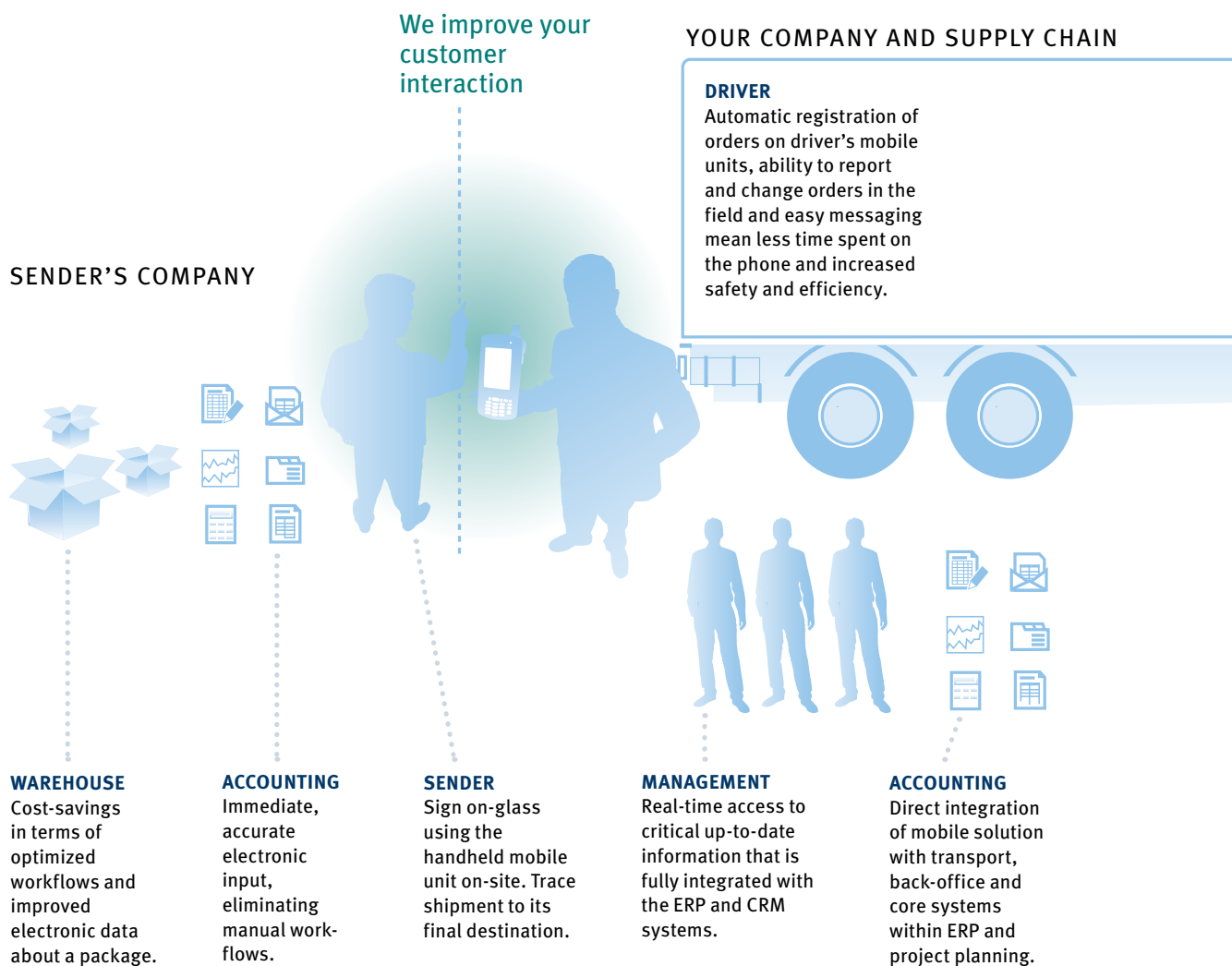


Mobile solutions for optimal transport management

ControlTransport is a set of intelligent tools that automate transport management in every aspect, from processing orders, controlling vehicle fleets and simplifying accounting and invoicing. The system provides total system transparency and reduces fuel, personnel and administration costs.

ControlTransport is a mobile solution that offers a range of benefits for transportation and logistics companies. It simplifies every assignment from

simple tasks such as shipping a package from A to B, through to complex logistic processes, greatly improving staff and vehicle float efficiencies.



“We’re talking about savings of approximately EUR 125 000 annually, but that is only one of the advantages. The mobile solutions from Consafe Logistics save time as well as money. Every driver in Närkefrakt saves as much as 30 to 60 minutes every day.”

KENNETH SERS, CEO OF NÄRKEFRAKT

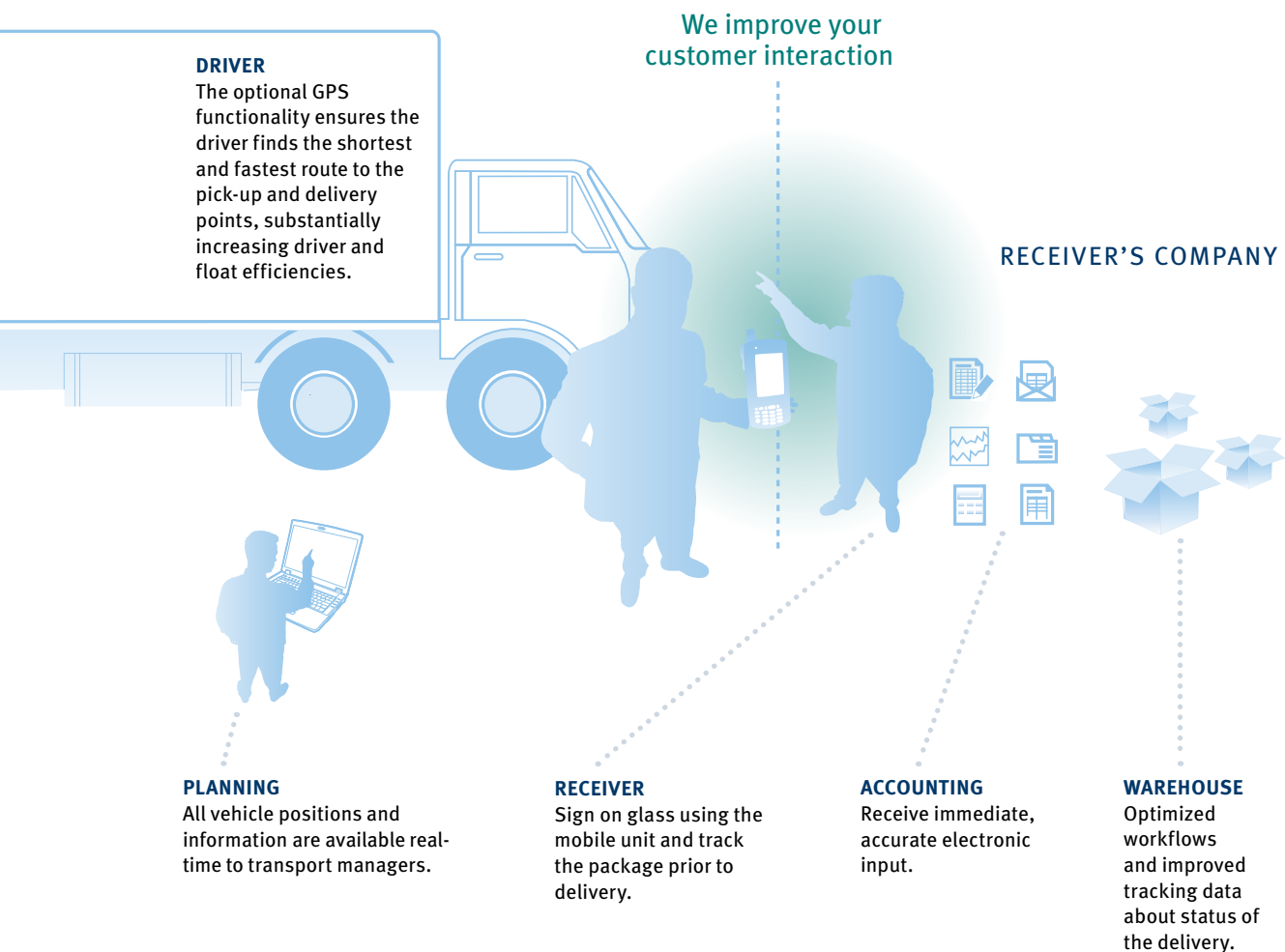
ControlTransport satisfies the increasing demands for traceability, correct recording of deliveries, efficiency and environmental certification.

The system automates processes and reduces paperwork and administration, resulting in fewer administrative tasks and far less errors.

The system can be directly integrated with the transport and back-office systems creating additional benefits and savings.

Benefits:

- Immediate retrieval of changes in order status out in the field
- Optional GPS displays geographical position
- Status management: Collect/load/deliver/unload
- On-site printout and invoicing
- Real-time updates between units and server
- Administration and monitoring of in-service vehicles by transport manager
- Central retrieval of vehicle information (speed, fuel consumption, mileage etc)
- On-screen proof of delivery (PoD) signatures



Your partner today and tomorrow

Consafe Logistics is a leading European provider of solutions to customers that use logistics to create a competitive advantage. For our customers we design, develop and implement knowledge based solutions in supply chain. To continuously add more customer value, we constantly innovate our portfolio of products and services. The offerings we provide are: System solutions in supply chain, Business Mobility solutions, Consulting and process improvements.

Consafe Logistics Group is a member of the JCE Group. We help customers in more than 20 countries all over the world from our offices in Sweden, Denmark, Norway, Netherlands, Poland, Russia and the United Kingdom.

Carlsberg	Hitachi	Volvo	Unilever
Canon	COOP	Norway Post	Michelin
REMA 1000	Hepworth Heating	Glud & Marstrand	Heineken
DSG International	Alfa Laval	Ferring	AJ Products
Dahl International	Hydro	SCA	Zbyszko
ICA	Dagab/Axfood	Akzo Nobel	Nestle Waters
JYSK	Group	Electrolux	Polska
Nestlé	ANWB	Asda-WalMart	Makro Cash & Carry
SKF	Lövenskiöld	Supergros	Valeo
ADPO	Arla Foods	Securitas	Dr Irena Eris
Valora Trade	Netto	Bacho Group	Olesiejuk Poland
Ahlsell	Onninen	Euro Park	
El-Giganten	Harper Collins	Elektroskandia	

Consafe Logistics AB
Porfyrvägen 14
224 78 Lund, Sweden
Phone: +46 46 280 04 00
Fax: +46 46 15 10 74

Consafe Logistics A/S
Meterbuen 33
2740 Skovlunde, Denmark
Phone: +45 44 50 29 00
Fax: +45 44 50 29 01

Consafe Logistics AS
Jogstadveien 11, P.O. Box 24
2011 Strømmen, Norway
Phone: +47 02143
Fax: +47 64 00 68 01

Consafe Logistics Sp. z o.o.
ul. Warszawska 100/102
05-092 Łomianki, Poland
Phone: +48 22 76 87 000
Fax: +48 22 76 87 099

Consafe Logistics B.V
Industrieweg 17
4731 SB Oudenbosch, Netherlands
Phone: +31 165 31 97 97
Fax: +31 165 31 97 01

Consafe Logistics Ltd.
Hortonwood 37, Telford
Shropshire, TF1 7XT, United Kingdom
Phone: +44 1952 676 501
Fax: +44 1952 670 454